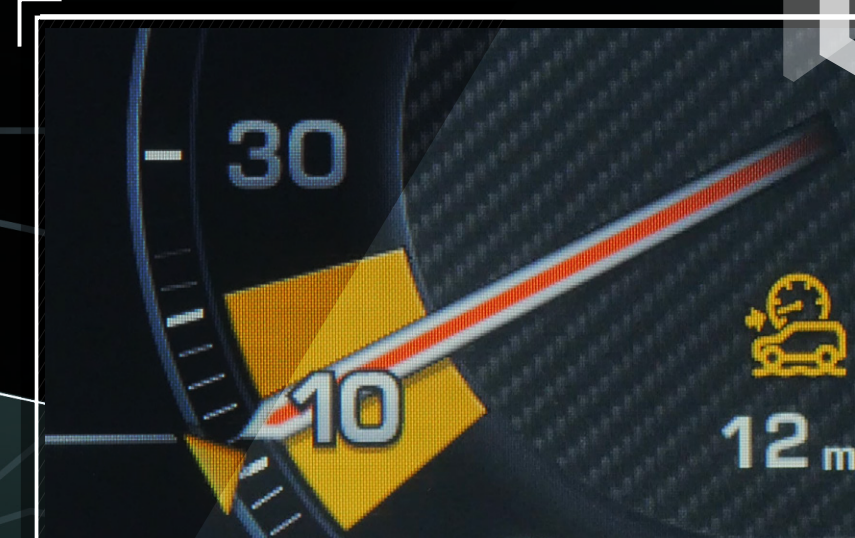
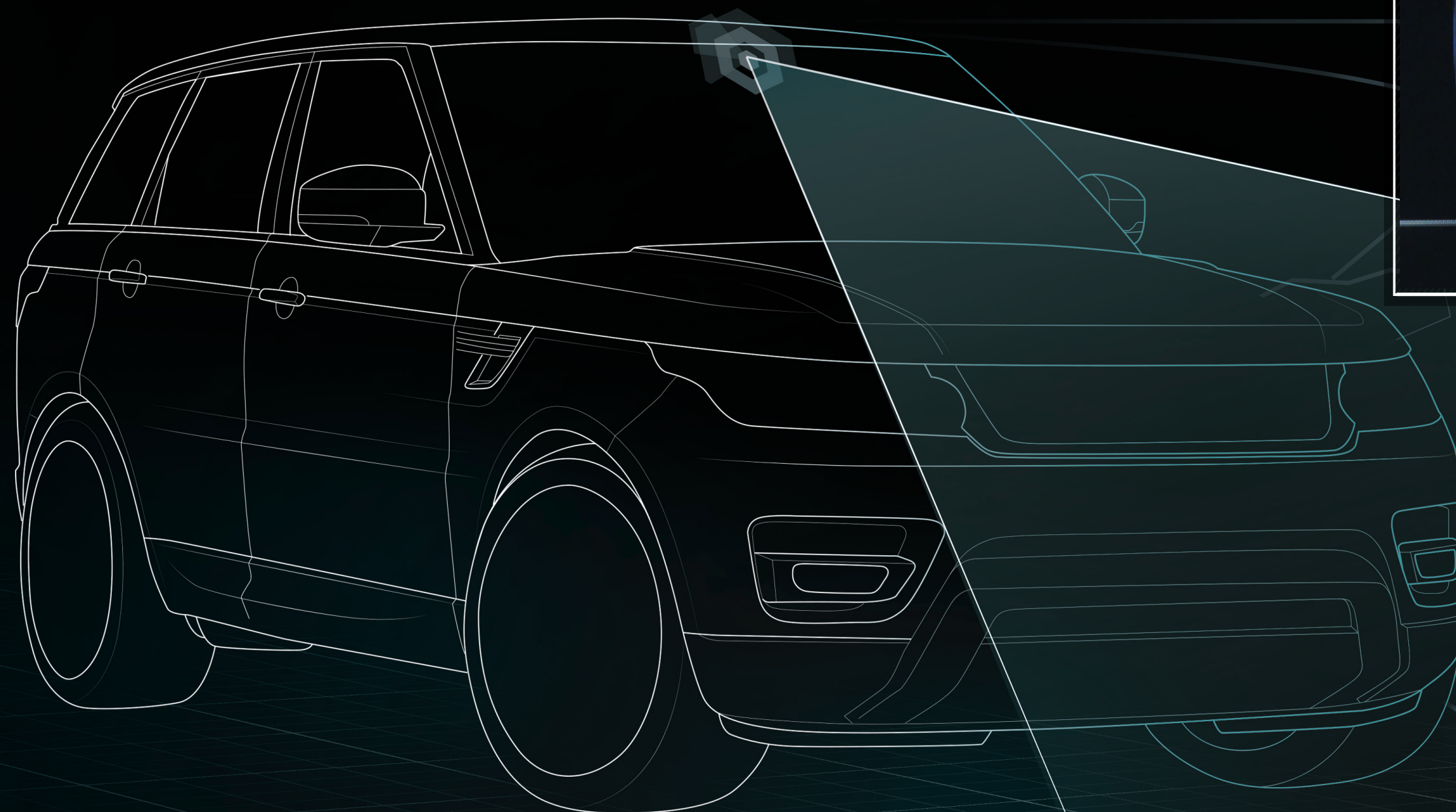


## TERRAIN-BASED SPEED ADAPTION

This research project gives the vehicle the ability to sense the path in front and automatically regulate its speed to suit the conditions. This reduces driver workload and increases ride comfort.

The system is intelligent enough to function pre-emptively and reactively: different features in the terrain are mapped against different target speeds, but speed is also managed according to the actual response of the vehicle and the suspension. TBSA can function on all surfaces but is particularly relevant off-road.



A next-generation stereo camera scans the terrain up to 30 metres ahead and, combined with data from accelerometers, steering inputs and ride height- and parking sensors, enables the TBSA system to automatically reduce vehicle speed for obstacles such as water-filled ditches