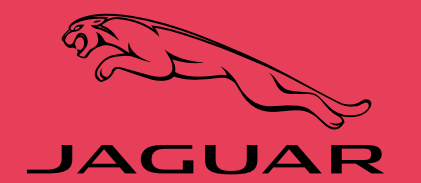


I-PACE

MEDIA INFORMATION



CONTENTS



“

W

here other companies talk about the future, we build it. We have torn up the rule book to create the newest member of the PACE family, the all-electric Jaguar I-PACE. With zero tailpipe emissions, no CO₂ and no particulates, it moves us dramatically closer to our vision of a clean, safe and sustainable future.”

DR. RALF SPETH
CEO, JAGUAR LAND ROVER



01
>

AT A GLANCE



- > **New all-electric I-PACE places Jaguar at the forefront of the electric vehicle revolution**
- > **Smart Settings** use artificial intelligence algorithms to tailor I-PACE to individual driver preferences
- > **Wireless over-the-air updates** to ensure customers always have the latest software
- > Electrifying all-wheel drive performance from twin Jaguar-designed motors with a combined 400PS and 696Nm delivering 0-100km/h in 4.8s
- > **Customer peace of mind from eight-year battery warranty¹ and 21,000-mile / two-year servicing**
- > 90kWh Lithium-ion battery delivers 470km range², with EV navigation to ensure range-optimised routing
- > **With zero tailpipe emissions, I-PACE owners may be eligible to benefit from lower road taxes, reduced tolls and even reduced congestion charges**
- > Designed from the outset as an electric vehicle (EV), the I-PACE offers bold aero-efficient design, and interior space for five adults and luggage
- > **Bespoke EV aluminium architecture delivers Jaguar's most torsionally rigid body structure with 50:50 weight distribution**
- > Rapid public charging from 0-80% in 40 minutes³, with 15-minutes charge giving 100km range
- > **Available to order now, priced from £63,495 in the UK [excluding government incentives]**

¹ 8-year battery warranty limited to 160,000km and 70% state of health. Whole vehicle warranty three-years/ 100,000km; ² Based on European WLTP cycle; ³ Based on 100kW DC charger

The Jaguar I-PACE is the electric vehicle drivers have been waiting for. Clean, smart and safe, the I-PACE delivers sustainable sports car performance, next-generation artificial intelligence technology and five-seat SUV practicality to place Jaguar at the forefront of the EV revolution.



“

W

we set out with a clean sheet approach to harness new battery electric technology with an architecture engineered from the outset to optimise performance, aerodynamics and interior space. The result is the I-PACE – a true Jaguar and a truly driver-focused EV.

For I-PACE customers – fuel stations are a thing of the past, after overnight charging they'll wake up every morning with a 'full tank of fuel'!"

IAN HOBAN

VEHICLE LINE DIRECTOR, JAGUAR I-PACE



02
> **ELECTRIC**

With a state-of-the-art 90kWh Lithium-ion battery using 432 pouch cells, the I-PACE delivers a range of 470km (WLTP cycle). Owners will be able to achieve a 0-80 per cent battery charge in 40-minutes using DC rapid charging (100kW). Home charging with an AC wall box (7kW) will achieve the same state of charge in just over ten hours – ideal for overnight charging.

A suite of smart range-optimising technologies includes a battery pre-conditioning system: when plugged in the I-PACE will automatically raise (or lower) the temperature of its battery to maximise range ahead of driving away.



**40
minutes**

0-80% CHARGE
USING 100kW DC
RAPID CHARGING

**15
minutes**

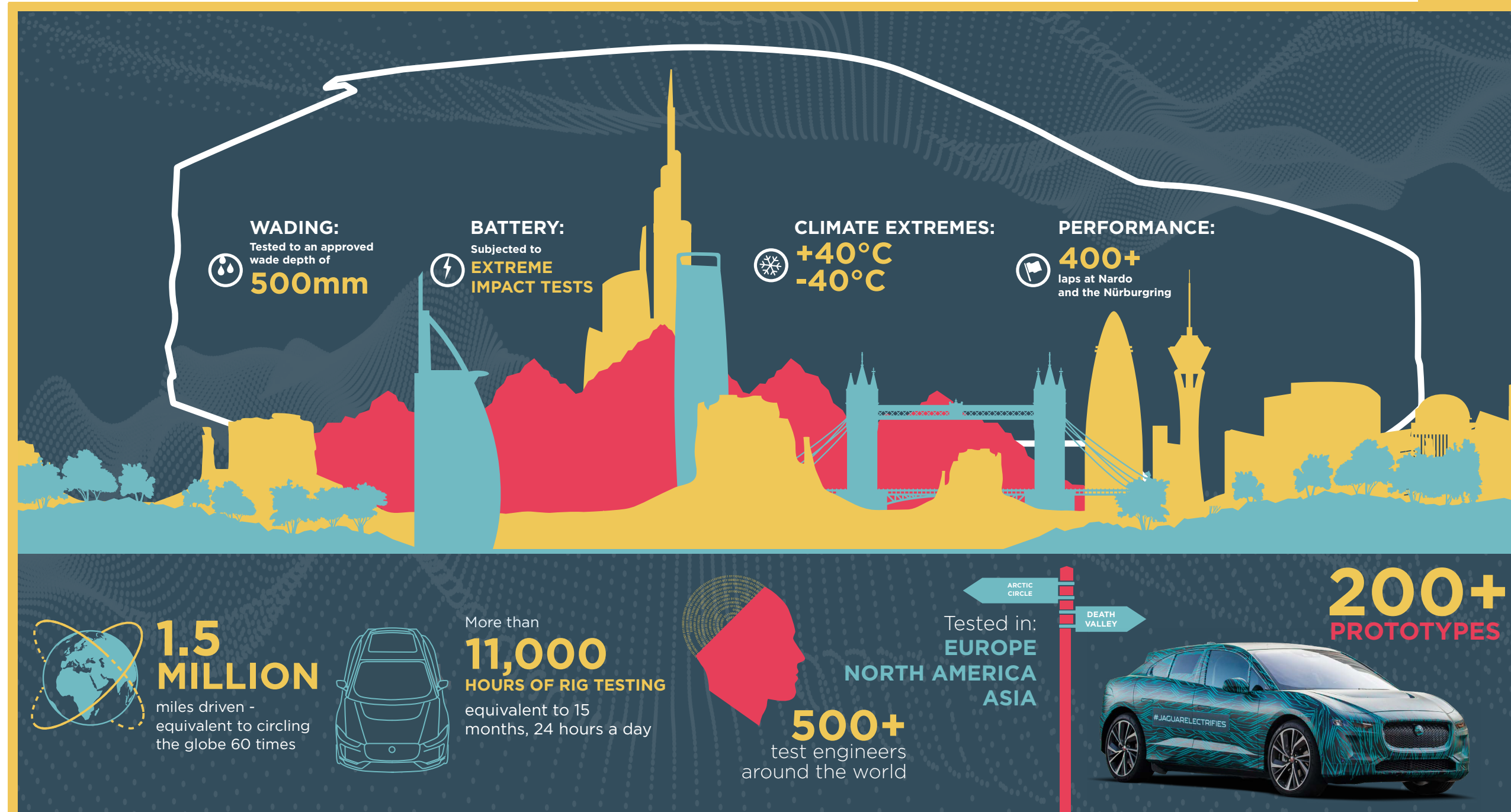
CHARGING AT 100kW
DC GIVES UP TO
100km EXTRA RANGE



> ELECTRIC

Electric Test Programme

JAGUAR
I-PACE
KEY FACTS



SUMMARY

03
>

PERFORMANCE



Two Jaguar-designed electric motors – which feature driveshafts passing through the motors themselves for compactness – are placed at each axle, producing exceptional combined performance of 400PS and 696Nm, and all-wheel-drive, all-surface traction.

The high torque density and high-energy efficiency characteristics of the motors deliver sports car performance, launching

the I-PACE from a standing start to 100km/h in just 4.8 seconds. The instantaneous performance is matched with exceptional ride comfort and engaging driving dynamics.

The bespoke EV aluminium architecture uses advanced riveting and bonding technology to deliver a light, stiff body structure. Together with the structural battery pack, it has a torsional rigidity of 36kNm/° – the highest of any Jaguar.

The battery is placed centrally between the two axles, and as low down as possible, with a seal between the housing and the underfloor. This location enables perfect 50:50 weight distribution and a low centre of gravity: together with the advanced double wishbone front and Integral Link rear axle with (optional) air suspension and configurable Adaptive Dynamics, this delivers agile handling and outstanding ride comfort.





4.8s
0-100km/h



400PS
POWER

696Nm
TORQUE

> PERFORMANCE

Electric Performance

JAGUAR I-PACE KEY FACTS

90kWh BATTERY

The battery is made up of 432 high energy density, Lithium-ion pouch cells, arranged in 36 modules of 12: the best technology to deliver maximum range, performance and efficiency



SINGLE-PEDAL DRIVING

The I-PACE's sophisticated braking system provides regenerative charging power to the battery in all driving modes – maximising range. And, by selecting the 'high' regenerative mode, it enables intuitive 'single pedal' driving in many conditions. Regenerative braking can produce up to 0.4G of braking force

470km
(292 miles)
RANGE ON THE
WLTP TEST CYCLE



40 MINUTES
RAPID CHARGING

Time taken to charge from 0-80% (100kW DC)
15-MINUTES CHARGING AT 100kW DC GIVES
UP TO 100km (62 miles) EXTRA RANGE



TWO ELECTRIC MOTORS

The Synchronous Permanent Magnet motors are light and extremely efficient. Packaging them concentrically with the single-speed transmissions makes them as compact as possible. Their position on each axle delivers all-wheel drive and, together with the underfloor battery, contribute to I-PACE's low centre of gravity to enhance control, handling and agility



36kNm/° TORSIONAL RIGIDITY

The integral battery structure means I-PACE is the stiffest vehicle in the Jaguar range – optimising handling agility and safety

7kW AC WALL BOX

Charges the battery from 0-80% in 10 hours – ideal for overnight charging at home

696Nm
TORQUE

4.5s
0-60mph

400PS
POWER

04
> DESIGN

There will be nothing else on the road that looks or drives like the Jaguar I-PACE. It is designed and engineered to take full advantage of its smart electric powertrain and maximise the potential of the packaging benefits it brings.

Its sleek, coupe-like silhouette is influenced by the Jaguar C-X75 supercar with a short, low bonnet, aero-enhanced roof design and curved rear screen. This cab-forward design contrasts with its squared-off rear, which helps reduce the drag coefficient to just 0.29Cd. To optimise the balance between cooling and aerodynamics, Active Vanes in the grille open when cooling is required, but close when not needed to redirect air through the integral bonnet scoop, smoothing airflow.



DESIGN SUMMARY

Inside, the layout optimises space for passengers while sophisticated materials – including the option of a premium textile Kvadrat interior – and exquisite attention to detail identify this as a true Jaguar.

While a mid-sized SUV, I-PACE's cab forward design and EV powertrain means interior space comparable to large SUVs. In the rear, legroom is 890mm while, with no transmission tunnel, there's a useful 10.5-litre central storage compartment. In the rear, tablet and laptop stowage is found beneath the seats, while the rear luggage compartment offers a 656-litre capacity – and 1,453 litres with seats folded flat.

890mm
REAR LEGROOM



10.5-litre
CENTRAL STORAGE
COMPARTMENT





> DESIGN

Electric Living

JAGUAR I-PACE KEY FACTS

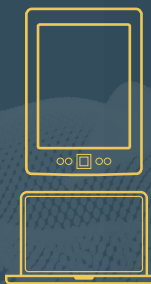


INFRARED ABSORPTION

The full-length panoramic roof absorbs UV light so there's no need for a blind: it keeps the cabin cool and increases headroom

DISCRETE STORAGE

Storage trays beneath the rear seats designed for laptops and tablets



656 LITRE

Rear luggage compartment, 1,453 litres with second row seats down, with flat floor for easy loading and unloading

DIGITAL SOUNDSCAPE

A meticulously tuned soundtrack works in harmony with the natural sound of the two electric motors, making the driving experience even more rewarding. In Dynamic mode the sound becomes richer still, reflecting I-PACE's driver-focused character



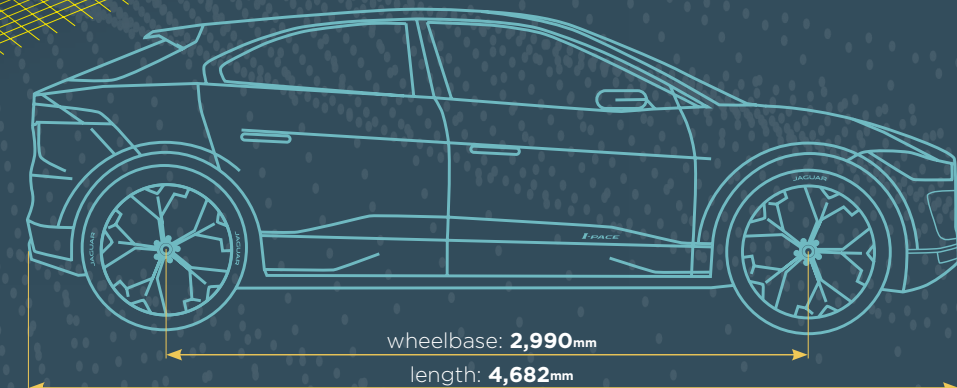
3 **12V SOCKETS**

6 **USB PORTS**

ELECTRIC ADVANTAGES

Electrification and the cab-forward design deliver exceptional interior space within a compact footprint

	HEADROOM	LEGROOM
FRONT	1,013mm	1,040mm
REAR	968mm	890mm



CONNECTED-CAR TECHNOLOGY

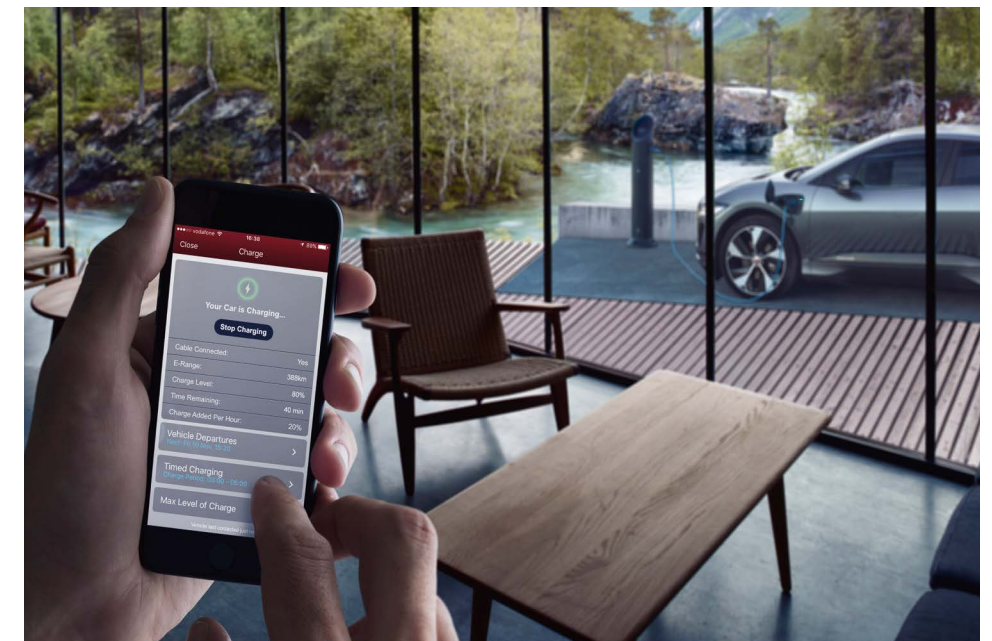


I-PACE introduces the Touch Pro Duo infotainment system to Jaguar. Utilising an innovative combination of touchscreens, capacitive sensors and tactile physical controls, Touch Pro Duo is intuitive to use.

A new EV navigation assesses the topography of the route to destination and insights from previous journeys, including driving style, to calculate personalised range and charging status with exceptional accuracy for maximum driver confidence.

The advanced system uses 'Smart Settings' technology – driven by AI algorithms – to identify individual driver preferences, and then tailors the I-PACE's driving and interior settings accordingly.

To ensure customers always have access to the latest infotainment, telematics and battery energy control software, I-PACE will be the first Jaguar to provide software over-the-air – providing seamless updates.





> CONNECTED-CAR TECHNOLOGY

Wired for Life

JAGUAR I-PACE KEY FACTS

BATTERY PRE-CONDITIONING



Prepare for a journey using the Remote app to pre-heat or cool the cabin and battery while plugged-in, using zero battery power and maximising range

SMART CHARGING

Pre-set home charging times to match best electricity tariffs

ECO MODE

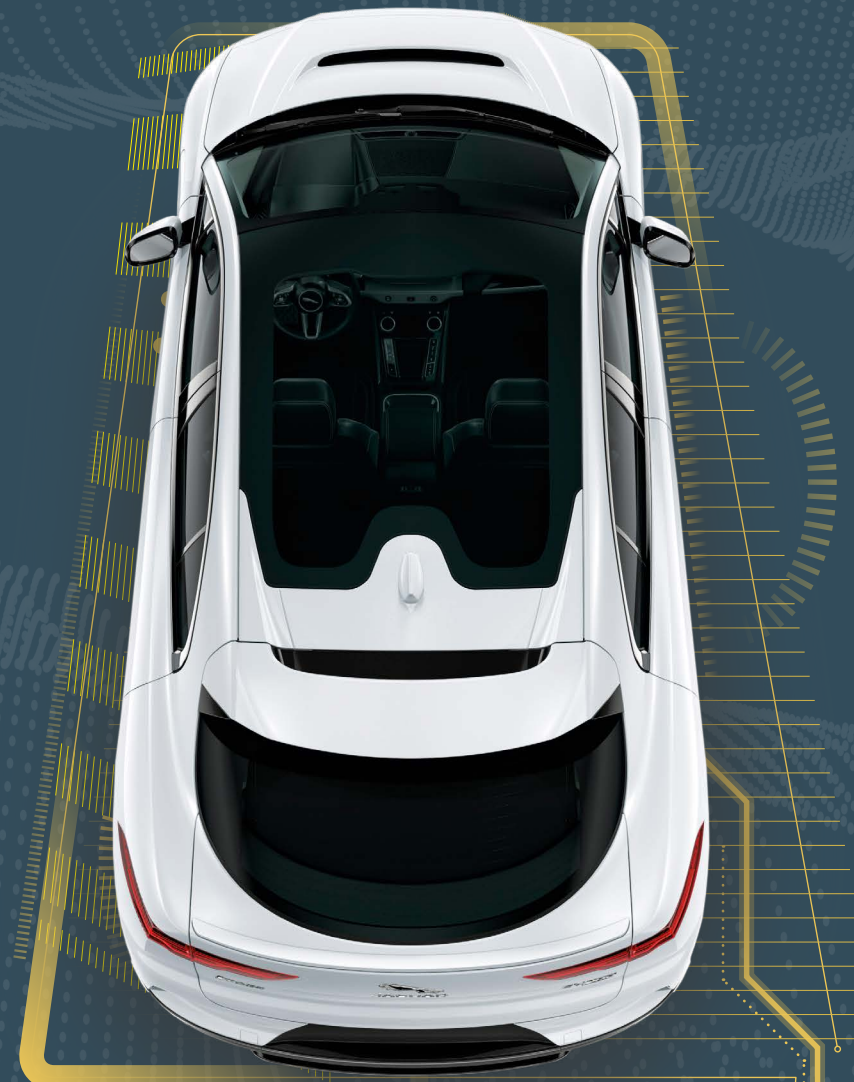
Enables extended range by turning off non-essential systems

ARTIFICIAL INTELLIGENCE



Reliable and accurate range data is calculated using key factors including climate settings, weather, topography, traffic conditions and driving style.

I-PACE's Smart Settings use AI to learn preferences on regular journeys – calculating changes in climate control settings and temperature, seat position and radio station at different times of the day – and adjust them for you autonomously



EV NAVIGATION

Shows range on a map, syncs with different driving modes and makes finding charging points easy, helping drivers plan their journeys

SOFTWARE OVER-THE-AIR

Wireless software updates to the infotainment and vehicle systems means I-PACE continuously improves over time



4G Wi-Fi HOTSPOT

for up to eight devices



INTELLIGENT PHONE REMINDER

If the driver has forgotten their smartphone, I-PACE will let them know

06
>

OWNERSHIP



With competitive whole-life costs and residual values, the I-PACE will be a popular choice for private customers, professionals and companies seeking to reduce their carbon footprint and fleet costs. The I-PACE will be available from 1 March, in S, SE and HSE derivatives alongside a First Edition, all inspired by the design of the original concept.

As a responsible business Jaguar Land Rover is committed to delivering a cleaner future and has plans to prolong the life of its batteries from its electric vehicle with new recycling partnerships and second life energy storage trials.

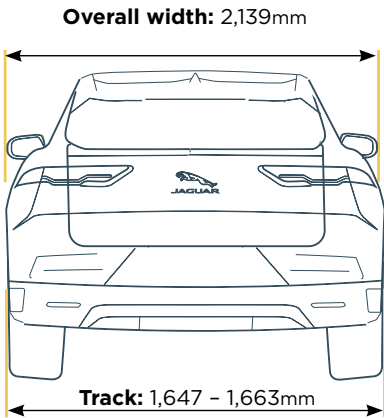
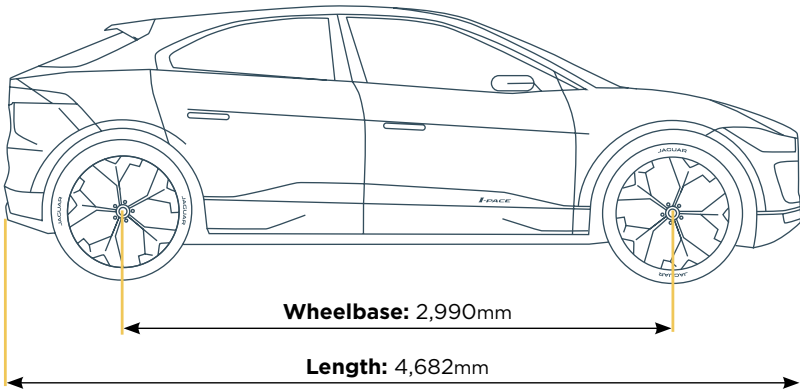
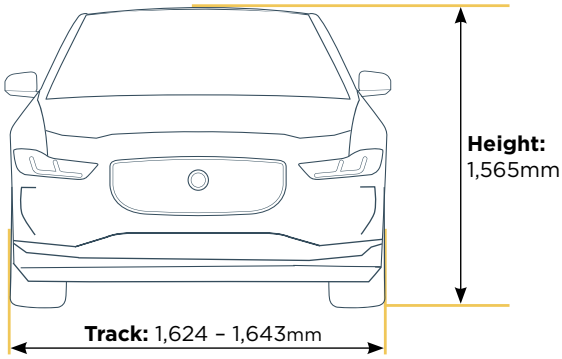


SPECIFICATIONS

07 >

TECHNICAL DATA

TECHNICAL DATA	
JAGUAR I-PACE	EV400
ELECTRIC MOTORS	
Configuration	Two permanent magnet electric motors; synchronous Single-speed epicyclic transmission; concentric with motor
Power PS (kW)	200 (147)
Torque Nm (lb ft)	348 (256)
Total system power PS (kW)	400 (294)
Total system torque Nm (lb ft)	696 (512)
DRIVETRAIN	
Configuration	Motor and transmission integrated into front and rear axles; Electric all-wheel drive
BATTERY	
Configuration	90kWh Li-ion; liquid-cooled; pouch cells
Number of cells / modules	432 / 36
Charging 0-100% on AC 7kW (hours)	12.9
Charging 0-80% on AC 7kW (hours)	10
Charging 0-80% on DC 100kW (mins)	40
CHASSIS	
Front suspension	Double wishbone
Rear suspension	Integral link
Front brake diameter (mm)	350 (Ventilated)
Rear brake diameter (mm)	325 (Ventilated)
Springs	Air or coil
Dampers	Continuously variable or passive
Steering	Rack-and-pinion; electromechanical
DIMENSIONS	
Length (mm)	4,682
Width incl. / excl. mirrors (mm)	2,139 / 1,895
Height (mm)	1,565
Wheelbase (mm)	2,990
Front track (mm)	1,624 - 1,643
Rear track (mm)	1,647 - 1,663
Weight; EU Unladen (kg)	From 2,208
Weight; DIN (kg)	From 2,133
Luggage compartment volume (litres)	656 plus 27 (front)
PERFORMANCE AND RANGE	
0-60mph (sec)	4.5
0-100km/h (sec)	4.8
Top speed mph (km/h)	124 (200)
Range (WLTP)	Up to 470km



THE JAGUAR PACE FAMILY



I-PACE



E-PACE



F-PACE